

FOUNDATION PLAN
 SCALE: 1/4" = 1'-0"
 NOTE: DOUBLE ALL FLOOR BEAMS UNDER PARALLEL PARTITIONS

**MODEL
 CANTERBURY**

A3

JOB NUMBER
2016202

DRAWING TITLE
FOUNDATION PLAN

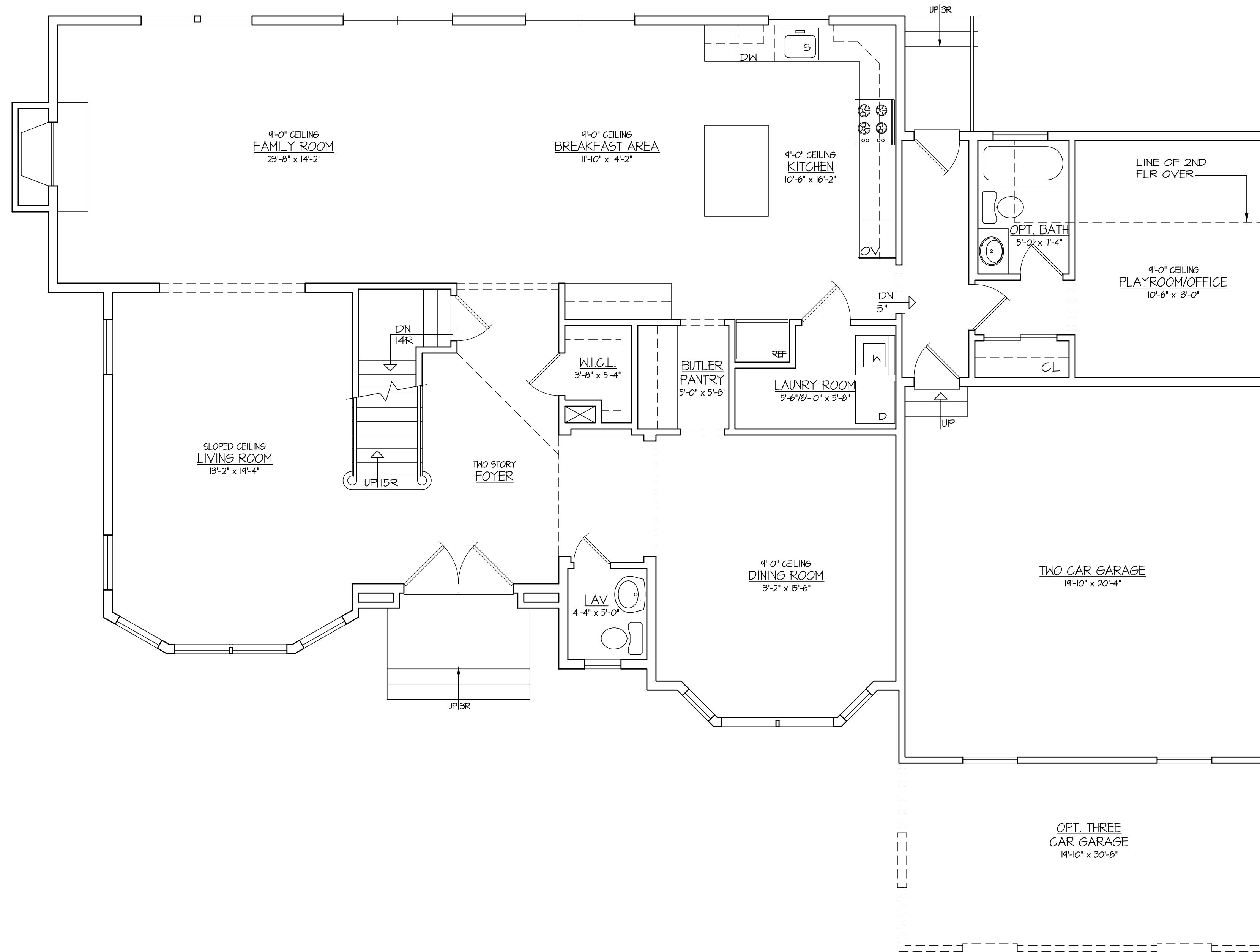
DRAWN BY: GRCH
 SCALE: 1/4" = 1'-0"
 CHECKED BY: GC
 DATE: 3/7/2016

REVISIONS:	DATE:
REVISIONS	12-4-06
REVISIONS	2-7-07
REVISIONS	7-1-07
REVISIONS	12-7-08
REVISIONS	1-28-18
REVISIONS	3-7-16
PRESENTATION PLANS	3-24-16
MASTER BATH REV	5-13-16

DOCUMENT STATUS: SCHEMATIC DESIGN DESIGN DEVELOPMENT NOT FOR CONSTRUCTION BID SET CONSTRUCTION DOCUMENTS

HARBORFIELD ESTATES
 GREENLAWN, TOWN OF
 HUNTINGTON N.Y.

ARCHitecture
 GRCH Architecture PC
 37750 Express Drive South
 Suite 202
 Hicksville, N.Y. 11749
 PH: (631) 864-3393 | www.grcharchitecture.com



FIRST FLOOR PLAN		
SCALE: 1/4" = 1'-0"	LIVING AREA=	1,843 SQ. FT.
	GARAGE AREA=	422 SQ. FT. (OPT. 635 SQ. FT.)
	TOTAL LIVING AREA=	3,404 SQ. FT.

**MODEL
CANTERBURY**

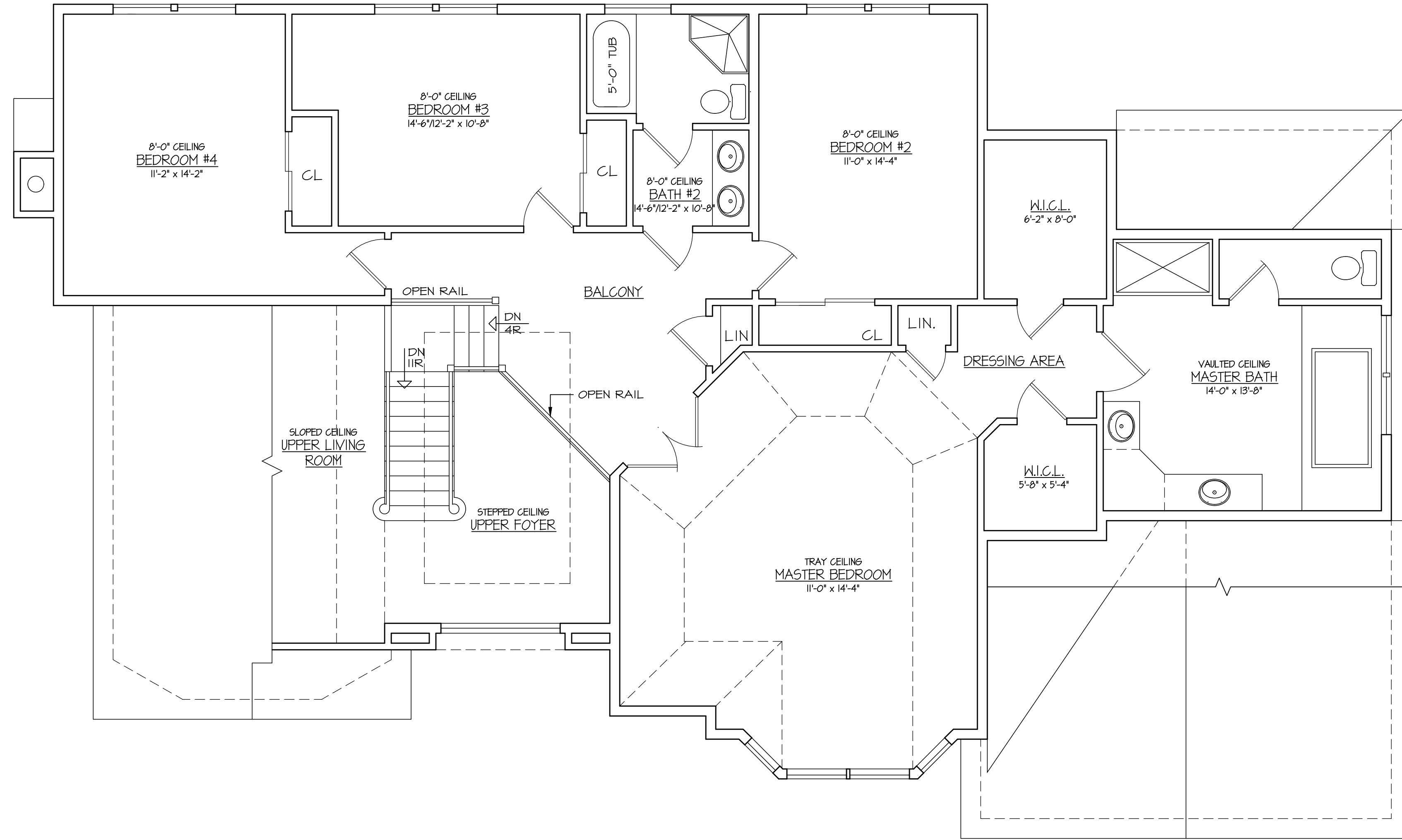
HARBORFIELD ESTATES
GREENLAWN, TOWN OF
HUNTINGTON N.Y.

REVISIONS	DATE:
REVISIONS	12-4-96
REVISIONS	2-7-97
REVISIONS	7-1-97
REVISIONS	12-7-98
REVISIONS	1-28-16
REVISIONS	3-7-16
PRESENTATION PLANS	3-24-16
MASTER BATH REV.	5-13-16

DRAWING TITLE:	FIRST FLOOR PLAN
DRAWN BY:	GRCH
CHECKED BY:	GC
SCALE:	1/4" = 1'-0"
DATE:	3/7/2016

JOB NUMBER	2016202
SHEET NUMBER	A4

DESIGN PHASE: SCHEMATIC DESIGN DESIGN DEVELOPMENT NOT FOR CONSTRUCTION BID SET CONSTRUCTION DOCUMENTS



SECOND FLOOR PLAN
 SCALE: 1/4" = 1'-0" LIVING AREA= 1,511 SQ. FT.

**MODEL
 CANTERBURY**

DESIGN PHASE: SCHEMATIC DESIGN DESIGN DEVELOPMENT NOT FOR CONSTRUCTION BID SET CONSTRUCTION DOCUMENTS

DRAWING TITLE: **SECOND FLOOR PLAN**

DATE: 12-4-96
 2-7-97
 7-1-97
 12-7-98
 1-28-16
 3-7-16
 3-24-16
 5-13-16

REVISIONS:
 REVISIONS
 REVISIONS
 REVISIONS
 REVISIONS
 PRESENTATION PLANS
 MASTER BATH REV.

DRAWN BY: GRCH
 SCALE: 1/4" = 1'-0" DATE: 3/7/2016

CHECKED BY: GC

JOB NUMBER: **2016202**
 SHEET NUMBER: **A5**

HARBORFIELD ESTATES
 GREENLAWN, TOWN OF
 HUNTINGTON N.Y.

ARCHitecture
 GRCH Architecture PC
 3750 Express Drive South
 Suite 202
 Bethesda, MD 20814
 PH: (831) 864-3395 | www.grcharchitecture.com